

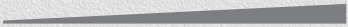
Entry / ECO

Standard / STD

Professional / PRO

ODM & OEM

Intelligent / INT



PRO
Specifications



LED Batten Light
DB186B Series



Introduction

This is a high quality easy replaceable LED batten with high lumen efficiency. It adopts high lumen efficiency SMD light source, PC cover is internal stripe design which makes a uniform light output. For structure, it has mainly two module parts, light source module and bracket module could be replaced freely; single CCT and 3CCT module can be interchanged based on the same bracket module. For installation, it utilizes plastic flexibility to clips the light source module into bracket, the end cap mounting hole allows loop in/ loop out connection, which offers more possibility for wider applications.

Features

- Compact design with screwless surface, which fit the ceiling tightly
- Functions: Adjustable CCT and adjustable wattage with slide switch
- High lumen efficiency, 180lm/W@4000K
- Size options:600/1200/1500/1800mm
- End cap with mounting hole for loop in/ loop out connection
- Internal flicker free driver

Application Areas

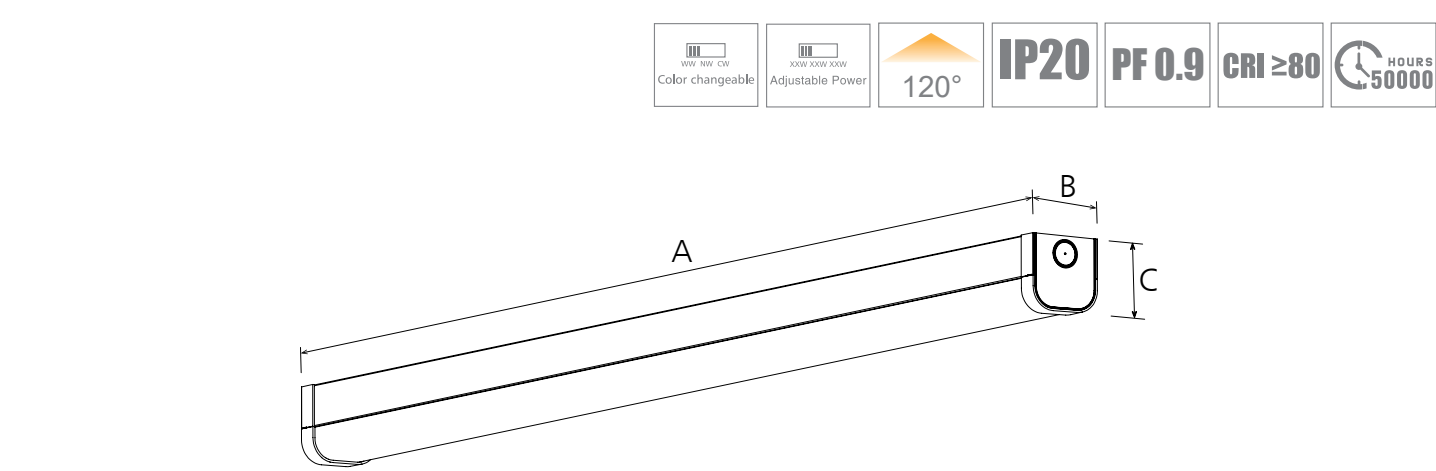
It is widely used in workshop, warehouse, parking lot, factories, shopping mall etc.





Technical Data Sheet

Code			DB186B-600-19W	DB186B-1200-30W	DB186B-1500-38W	DB186B-1800-48W
Dimension(mm)			600*65*66	1200*65*66	1500*65*66	1800*65*66
Cutout (mm)			-			
Watt(W)			19W@max (optional:15W / 13W / 9W)	30W@max (optional:25W / 20W / 15W)	38W@max (optional:34W / 25W / 19W)	48W@max (optional:39W / 35W / 24W)
Rated Input Voltage			AC220-240V			
Input Voltage			AC198-264V			
LED Module Input			-			
Light Source			SMD			
SDCM			< 6			
CCT(K)			1-CCT: 3000K/4000K/5000K/5700K 3-CCT: 3000K + 4000K + 5700K			
CCT Selection DIP Switch			YES			
Luminous Flux (lm) ±5% CRI80	1-CCT	Non-DIM	2900-3250	4900-5400	6250-6840	7900-8640
		DIM	-			
	3-CCT	Non-DIM	2900-3250	4900-5400	6250-6840	7900-8640
		DIM	-			
CRI			80			
Beam Angle (°)			120°			
UGR			-			
LED Driver			Built-in			
Dimming Option			-			
Sensor			-			
Emergency Kits			-			
Electrical Class			Class I			
Ingress Protection(IP Rating)			IP20			
Impact Resistance(IK Rating)			IK06			
Product Finishing			White RAL 9016			
Optics Material			PC			
Housing Material			PC / SPCC			
Lifetime (hr)			50,000h			
Glow wire test (°C)			750°C			
Operating Temp.(°C)			-20°C~40°C			
Storage Temp.(°C)			-20°C~65°C			
Installation			Surface mount / Pendant			



Measurement

Code	Dimension(mm)			Size(mm)	Product Weight (Kg)		Package weight (Kg)		Carton Size(cm)	Qty/CTN	20GP (pcs)	40HQ (pcs)
	A	B	C		N.W/PC	G.W/PC	N.W/CTN	G.W/CTN				
DB186B-600	600	65	66	600*65*66	0.55	0.78	6.6	10.12	71.5*32*28	12	5376	12096
DB186B-1200	1200	65	66	1200*65*66	0.95	1.34	5.7	8.88	131.5*24.5*19.5	6	2508	5928
DB186B-1500	1500	65	66	1500*65*66	1.14	1.61	6.84	10.66	161.5*24.5*19.5	6	2046	4992
DB186B-1800	1800	65	66	1800*65*66	1.33	1.88	7.98	12.44	191.5*24.5*19.5	6	1782	4212

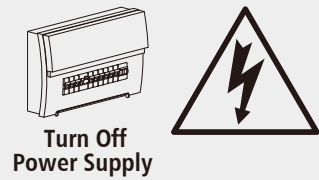
Driver Datasheet(Non-dimmable)

Total load wattage		20W/16W/13W/10W	30W/25W/20W/15W	40W/35W/25W/20W	50W/40W/35W/25W
Output	Rated output current	130mA@max (optional:110mA / 85mA / 65mA)	210mA@max (optional:175mA / 130mA / 105mA)	270mA@max (optional:230mA / 170mA / 135mA)	335mA@max (optional:270mA / 235mA / 170mA)
	Output Voltage range	DC120-150V			
	Line Regulation	±0.5mA			
	Setup, Rise Time	≤0.5S @230V			
	Flickering Index	0.5%(NO RISK)			
Input	Rated Input Voltage	AC 220-240V			
	Input Voltage	AC198-264V			
	Frequency	50/60Hz			
	Rated Input Current	0.10A	0.16A	0.20A	0.25A
	Input Current	0.11A	0.17A	0.21A	0.27A
	Power Factor	≥0.9			
	THD	-			
	Efficiency	≥90%			
	No load wattage	<0.5W @ 230Vac			
Protection	Short circuit protection	PASS			
	Over voltage protection	PASS			
	Over temperature protection	PASS			
Safety & EMC	Withstand voltage	-			
	Isolation Resistance	-			
	Surge	IEC/EN61000-4-5(P<25W; L-N:500V, L/N-PE:1KV)	IEC/EN61000-4-5 (P≥25W L-N:1KV, L/N-PE:2KV)		
	EMC Emission	EN55015, EN61000-3-2			
	EMC Immunity	EN61000-4-2,3,4,5,6,8,11; EN61547			

■ Installation Procedure

WARNING ⚡

- 1. Switch off before installation.
- 2. Switch on only after complete installation and examination of the circuit.
- 3. Professional electrician for installation and maintenance only.



Turn Off power supply before starting any installation. Read instructions & check you have all the tools & accessories to complete the installation correctly.

■ Surface mount installation

1-1

1-2

Spec	Hole spacing
600mm	488mm
1200mm	940mm
1500mm	940mm
1800mm	940mm

2 3

4

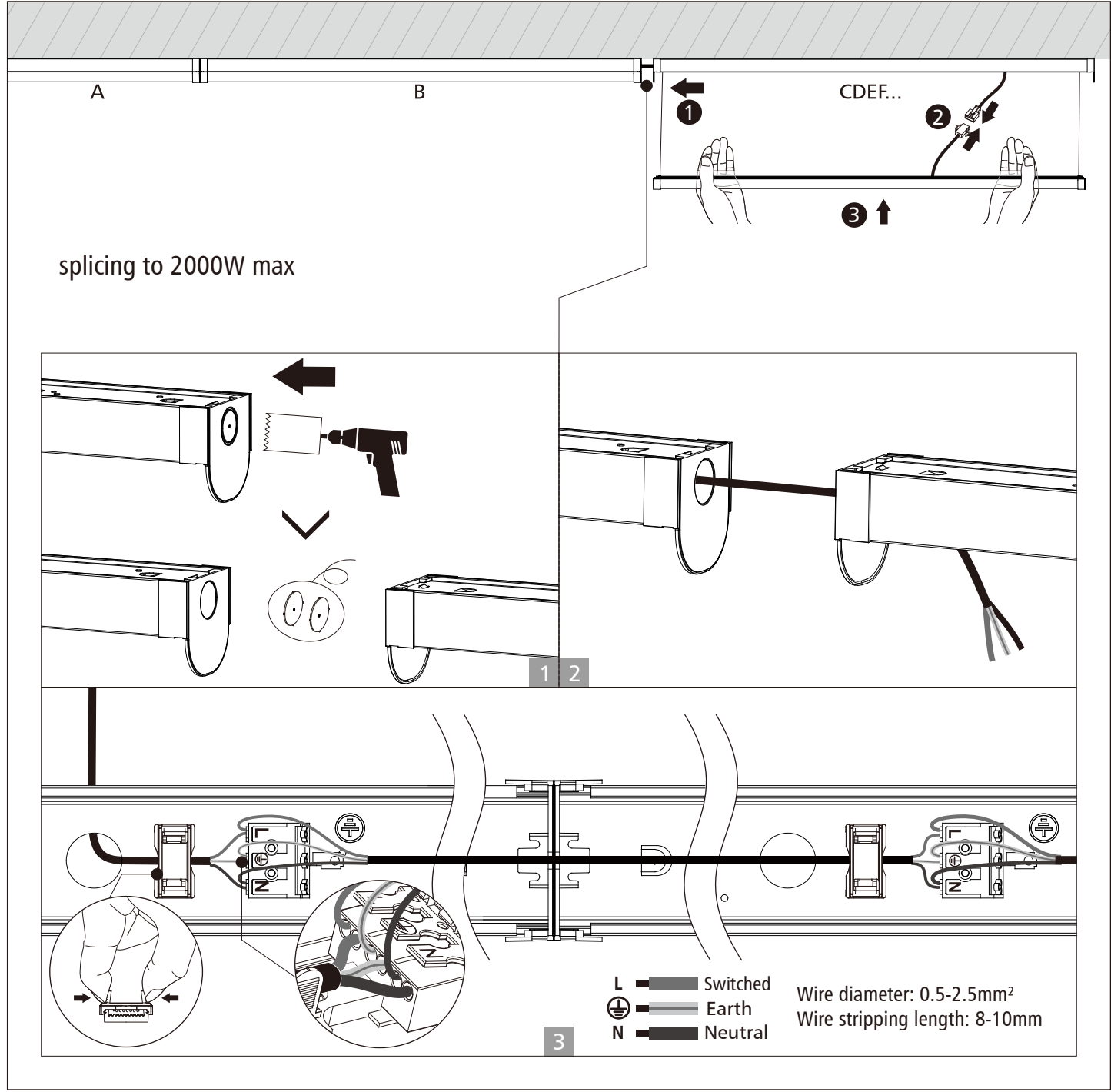
Standard	Emergency	DALI
<p>L = Switched ⊕ = Earth N = Neutral</p>	<p>L' = Switched L = Unswitched ⊕ = Earth N = Neutral</p>	<p>L = Switched N = Neutral ⊕ = Earth DA/L DA/N</p>

5-1 5-2

6-1 6-2

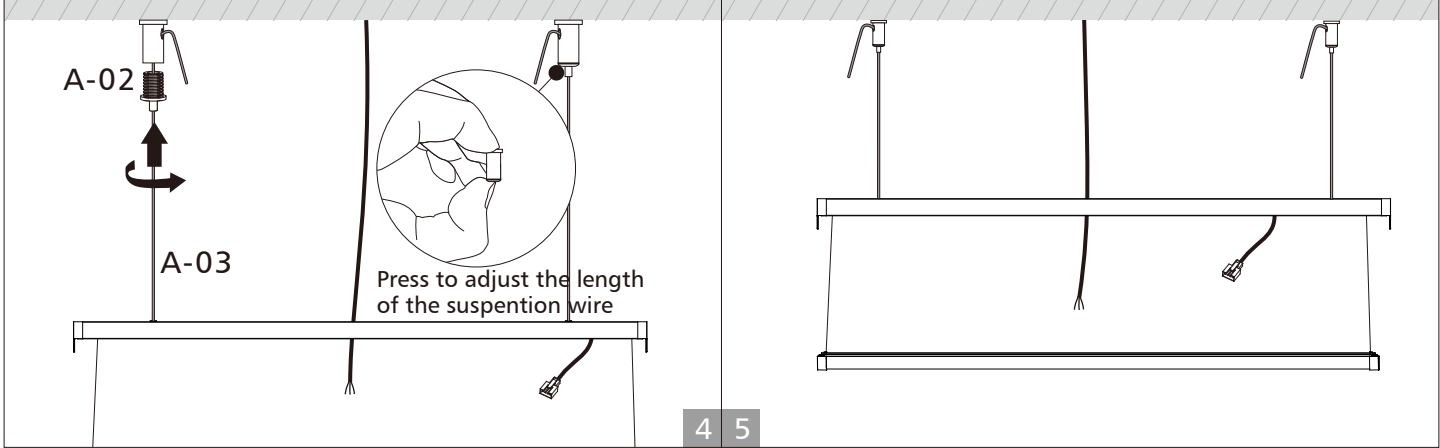
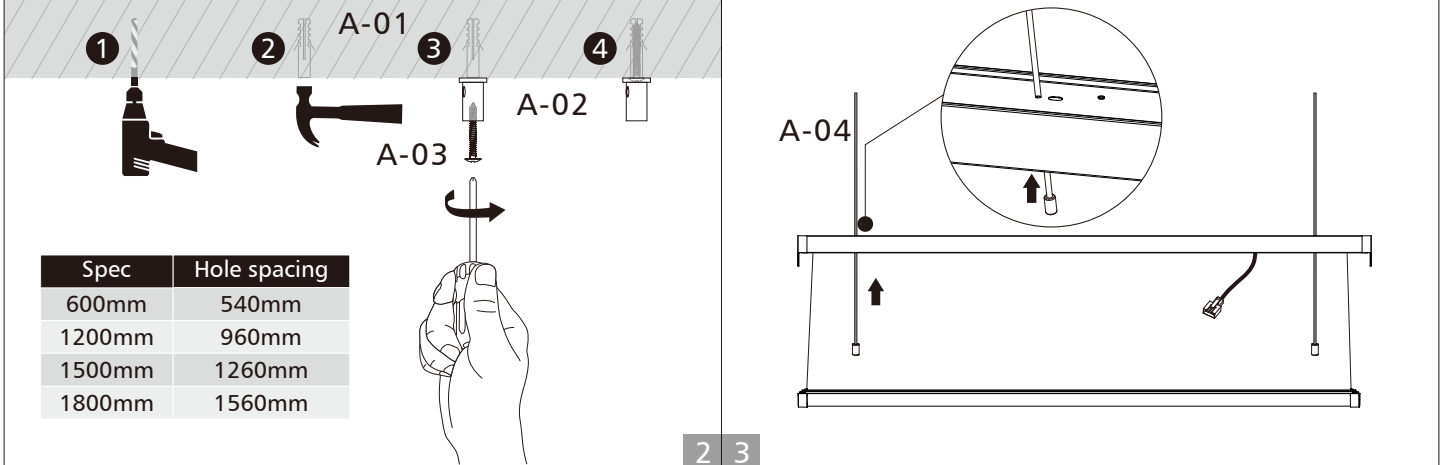
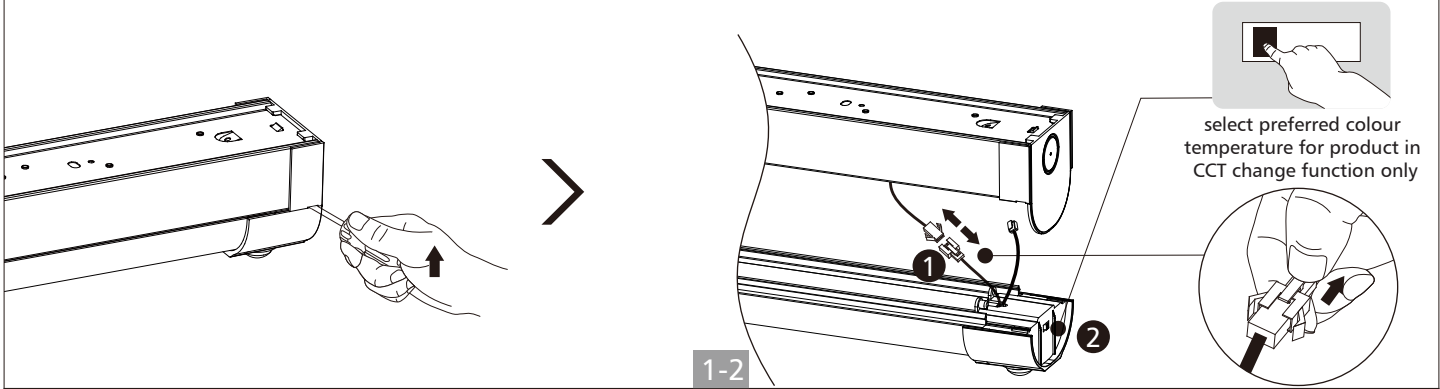
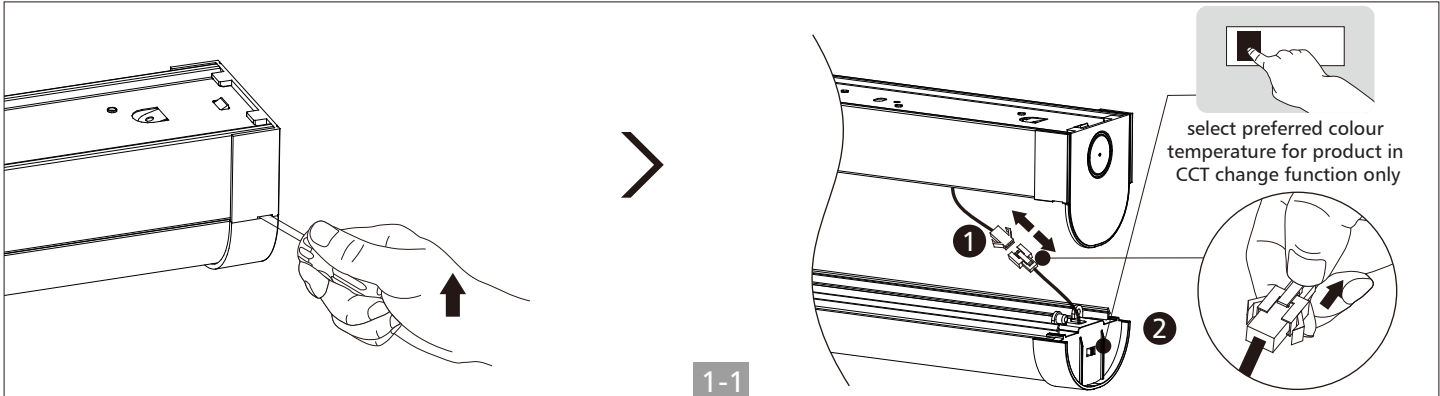
COMPLETE

■ Splicing for surface mount installation



■ Pendant installation

Code	A-01	A-02	A-03	A-04
ACC	x2	x2	x2	x2





UPSHINE | *Up to Shine, there is life*
光之上，是生活

▼ www.upshine.com info@upshine.com TEL: +86 755 2919 7332 ▼

Add: 2nd building Dingfeng High-Tech Zone, Fuyuan 1st road, Fu Yong Sub-district, Bao'an, Shenzhen China